

BC Timber Sales - Kamloops
Clearwater Field Team

David Lake Visual Assessment

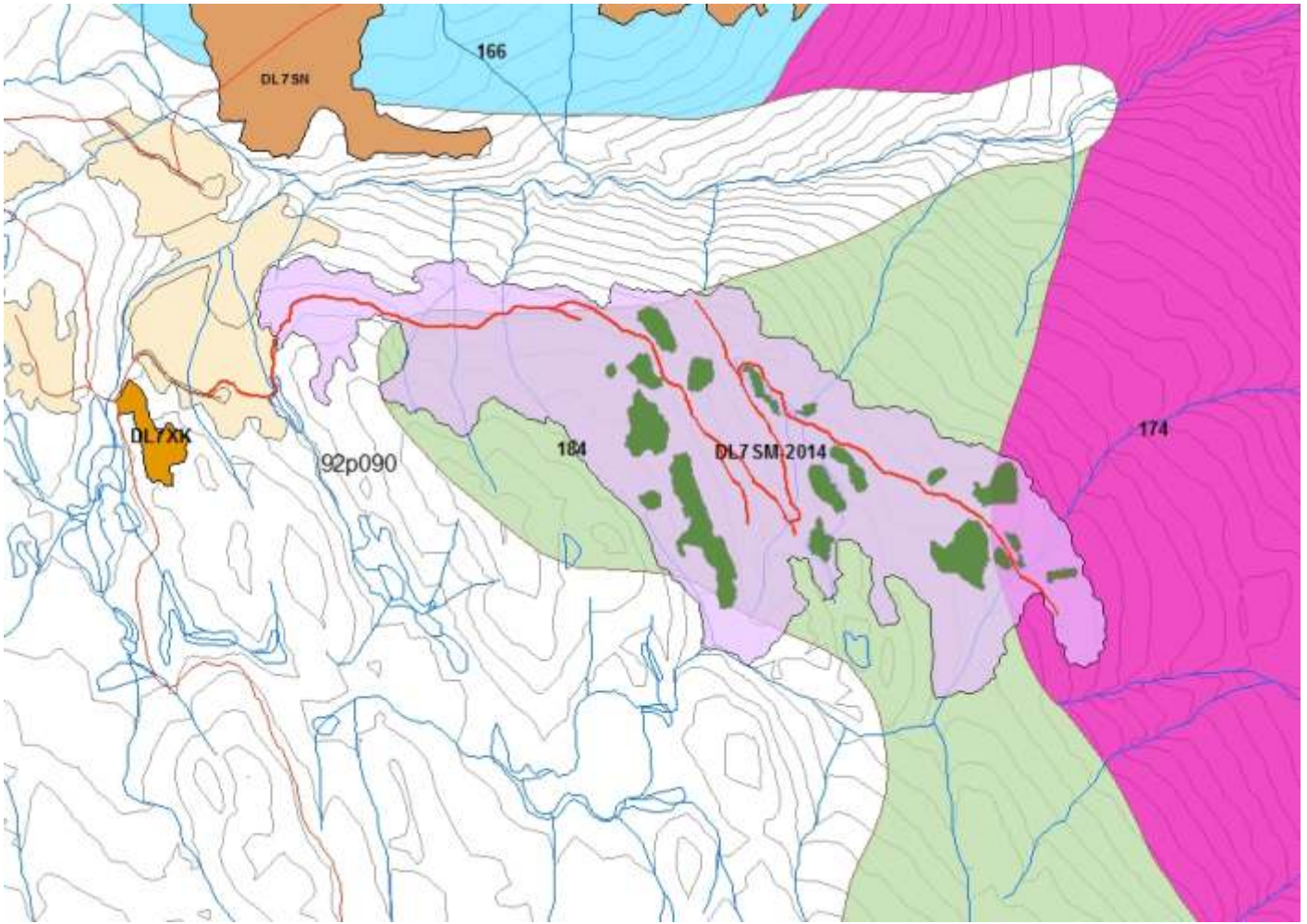
A89947 (DL7SM) 2014 Amendment

with Reference to September 2012 Report Blocks
DL7SM, DL7SN, DL7UJ, DL7UP, DL7XK, DL7XL, DL7R6, DL7R8, DL7UU

produced by
RDI Resource Design Inc
January, 2014

Contents

1	Key Map
2	Contents
3	Close-up DL7SM Amendment
4	VIA Summary Table
7	All Viewpoint Comparative
8	VP 3rd Canyon Analysis
9	VP 3rd Canyon Percent Alteration
10	VP 21 Analysis
11	VP 21 Percent Alteration
12	VP 22 Analysis
13	VP 22 Percent Alteration
14	VP 24 Analysis
15	VP 24 Percent Alteration



DL7SM 2014 with WTPAs and Roads

Visual Impact Assessment Summary Table

Clearwater Field Team

BCTS Kamloops Business Area

Licence Number	A89947 A89948 A90519	CP# & BLK #, or RP#:	DL7SM DL7SN DL7UJ DL7UP DL7XK DL7XL DL7R6 DL7R8 DL7UU	Map Reference #:	92p090	Proposed year of Harvest	2014	Proposed Silv System	CC with WTPAs
Type of Proposed Alteration (e.g. Cutblock, Road or Pipeline R/W, Oil lease, etc.)					Cutblock				

Licence	Block	Mapsheet	VSU #
A89947	DL7SM	92p090	184-174
A89948	DL7SN	92p090	166
	DL7UJ	92p090	144-NVS**
	DL7UP	92p090	144-NVS*
	DL7XK	92p090	NVS*
	DL7XL	92p090	NVS*
A90519	DL7R6	92p090	NVS*
	DL7R8	92p090	166-NVS*
	DL7UU	92p090	NVS*

*NVS in VSU column means entire area is outside of VSU coverage.

** Block is in previously unmapped visible area

VISUAL LANDSCAPE INVENTORY LABEL

Kamloops LRMP

VSU#	VSC	VAC	EVC	eVQO
166	3	M	R	M
144	3	M	M	M
174	2	M	R	PR
184	2	L	R	PR

EVC does not exceed eVQO in any VSU

VIEWPOINTS & VIEWING CONDITIONS

Block	VP 3rd*	VP21	VP22	VP24
(View Dist.)	(5km-MG)	(3km-MG)	(4km-MG)	(8+km-BG)
VP Type	Road Informal; Canyon Feat.; Significant	Road Informal; Buffalo Ranch; Significant	Road Informal; Minor	Road Informal; Wells Gray Guest Ranch; Significant
DL7SM	VIS	VIS	VIS	VIS**
DL7SN	VIS	VIS	VIS	VIS**
DL7UJ	VIS	VIS	NVS	NVS
DL7UP	NVS	NVS	NVS	NVS
DL7XK	NVS	NVS	NVS	NVS
DL7XL	NVS	NVS	NVS	NVS
DL7R6	NVS	NVS	NVS	NVS
DL7R8	NVS	NVS	NVS	NVS
DL7UU	NVS	NVS	NVS	NVS

*VP 3rd is at Third Canyon

** Potentially Visible Only

ASSESSING BASIC VQO DEFINITION

Do the proposed alterations, in combination with any existing Non-Veg alterations, achieve the basic VQO definition for the established VQO from each of the identified viewpoints?

VP 3rd Canyon VSU 184-174 (PR) Yes	VP 21 VSU 184-174 (PR) Yes	VP 22 VSU 184-174 (PR) Yes	VP 24 VSU 184-174 (PR) No*
VSU 166-174/144(PR) Yes	VSU 166-174(PR) Yes	VSU 166-174(PR) Yes	VSU 166-174(PR) Yes
VSU144 (M)-NVS Yes	VSU144 (M)-NVS Yes		

If applicable state reasons why the proposal does not achieve the basic definition.

Rationale for combining VSUs.

*VSU 184 is a narrow ridgetop sliver seen together with the much larger VSU 174 at the base. Block DL7SM crosses both VSUs. The VSUs were combined for logical analysis (landform as seen from viewpoints). The alteration is somewhat large from VP 24 but well-designed. The viewpoint offers only potential viewing towards the blocks, in background view.

Although VSUs 166 and 144 have M VQO, these were combined along with the north portion of VSU 174 laying at the base of VSU 166 for logical analysis, with the aim of meeting PR. Block DL7SN is fully located in VSU 166. Block DL7UJ is fully located in an area marked in Visual Landscape Inventory as NVS (not visible) adjacent to VSU 144.

Partial Retention is defined as "an alteration of a forest landscape resulting from the presence of cutblocks or roads, such that, when assessed from a viewpoint that is representative of significant public viewing opportunities, the alteration (a) is easy to see, (b) is small to moderate in scale, and (c) has a design that appears natural and is not angular or geometric."¹

If applicable, which basic VQO definition would the proposed alteration in combination with any existing Non-VEG alterations meet?

N/A or P R PR M MM EM

The proposed alterations in their entirety meet PR from all viewpoints with the exception of the "potential" view from VP 24 which is a background view (8.5km) and only potential if seen through the trees

ASSESSING VISUAL DESIGN

Do the proposed alterations exhibit elements of good visual design?

YES NO

Do the proposed alterations respond to the lines of force analysis?

YES NO

If No why?

Design principles and practices used to blend the proposed alteration(s) with the landscape (e.g. edge treatment & feathering, irregular boundaries, leave trees/patches, etc.):

The blocks are screened for the most part by intervening trees and topography along the Wells Grey Park Road. Blocks DL7SM and DL7SN are most evident, with possible glimpses DL7UJ further away in glimpse views from 3rd Canyon, and the first two from longer-term views from VP 21 (Buffalo Ranch), VP22 - a roadway view, and in background view from VP24 (Blackhorse Guest Ranch). The blocks are well-designed, following lines of force. The planned WTPAs in DL7SM break up the block considerably. A recommended addition of two more WTPAs designed by RDI would further the reduction of overall form and scale.

Are there existing human made alterations visible in the unit showing no or poor design?

NO YES

¹ Forest and Range Evaluation Program, 2008. Protocol for Visual Quality Effectiveness Evaluation Procedures and Standards, p.10.

ASSESSING SCALE OF ALTERATION - see viewpoint image sheets for details

Percent Alteration		
	VSUs 184-174	VSUs 166-174/144/NVS
3rd Canyon	0.03	6.12
VP21	0.9	5.74
VP22	6.95	3.57
VP24	11.19	1.20

See rationale for combining VSUs on previous page

FOREGROUND ALTERATIONS AND SCREEN DESIGN

Is the visible portion of proposed alteration within 1 kilometre of the viewing locations? _____
YES **NO**

Does vegetative or landform screening exist? _____ WTPAs **YES** **NO** in DL7SM **NO**
 If yes, what type: Deciduous Coniferous Mixed Forest Landform

Would the screen hide proposed operations? _____ **YES** **NO** **Partial**

Is vegetative screen designed properly ie responds to lines of force, shape & scale and remains a viable unit for future removal? _____ **YES** **NO** **N/A**

Is vegetative screen expected to be windfirm? _____ **YES** **NO** **N/A**

If alteration would not be screened or only partially screened, describe the actions proposed to reduce the visual impact in the immediate foreground (e.g. landing location, roadside clean-up, etc.)

ADDITIONAL CONSIDERATIONS

Does the EVC in adjacent units exceed the established VQO for those units and how would this affect the management of the present unit proposed for alteration? _____ **YES** **NO**

Comments: _____

Has this VIA submission incorporated all known alterations proposed within the Visual Sensitivity Unit for the next 5 years? (i.e. all blocks proposed by the same or different licensees) _____ **YES** **NO**

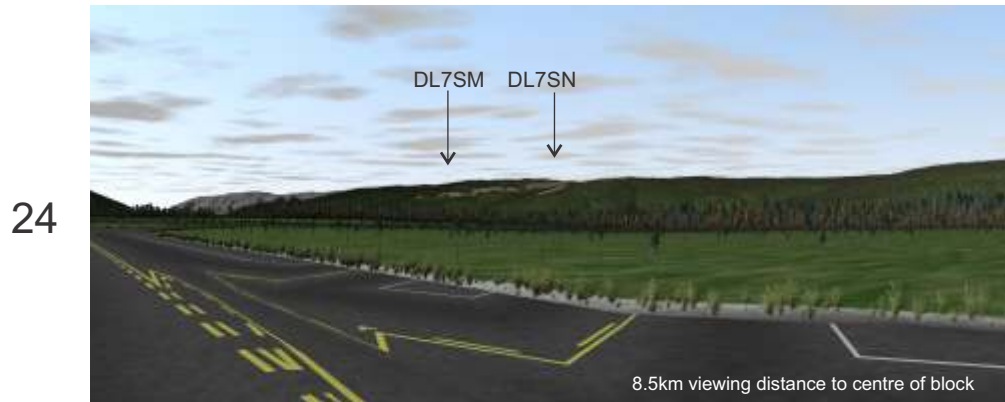
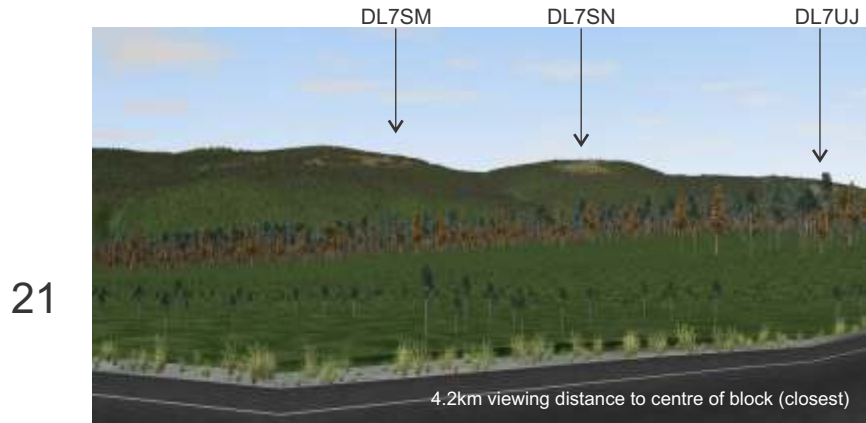
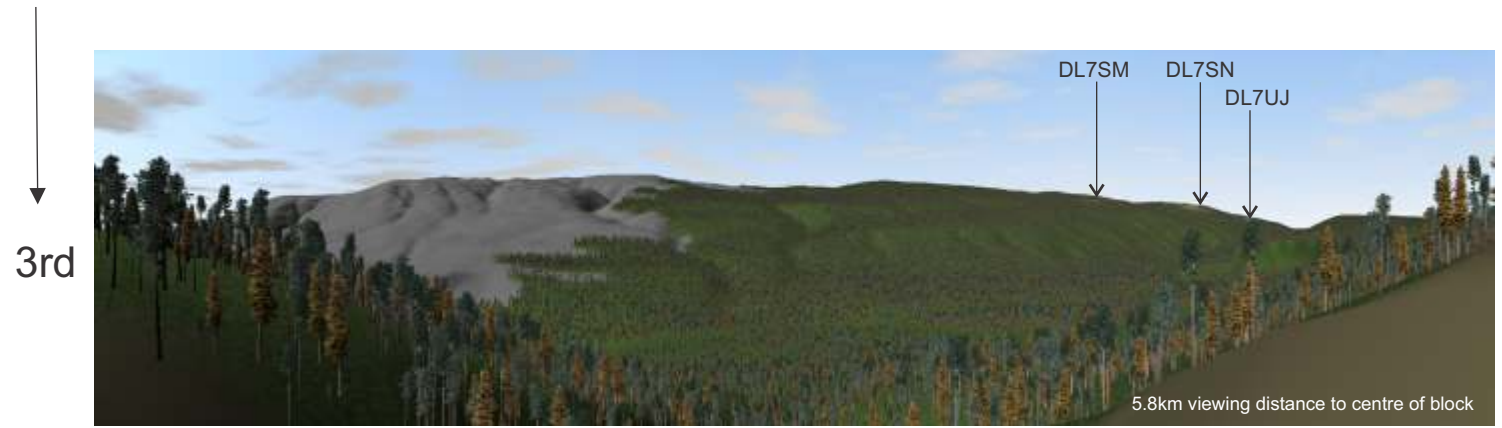
Comments: _____



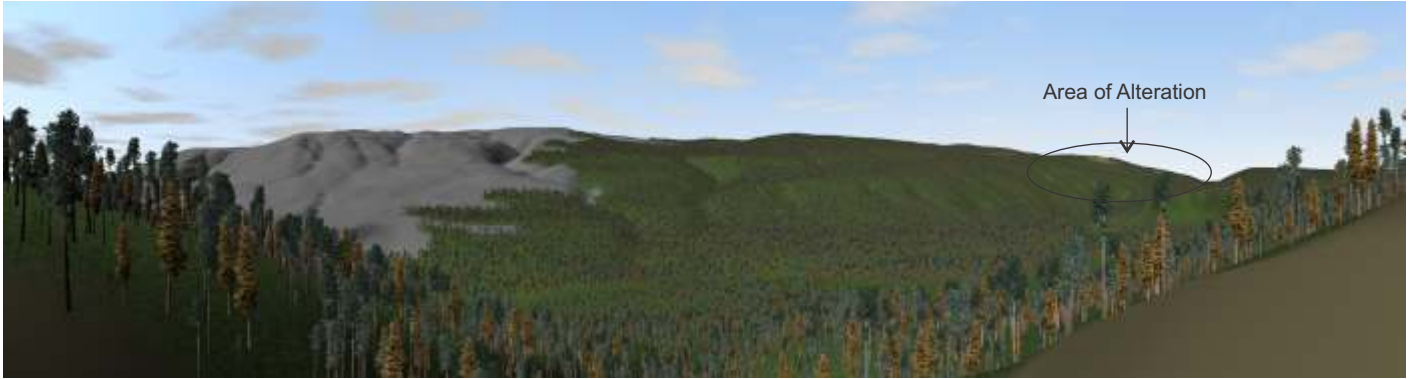
Completed by: Ken B. Fairhurst, R.P.F.

Date Completed: January 10, 2014

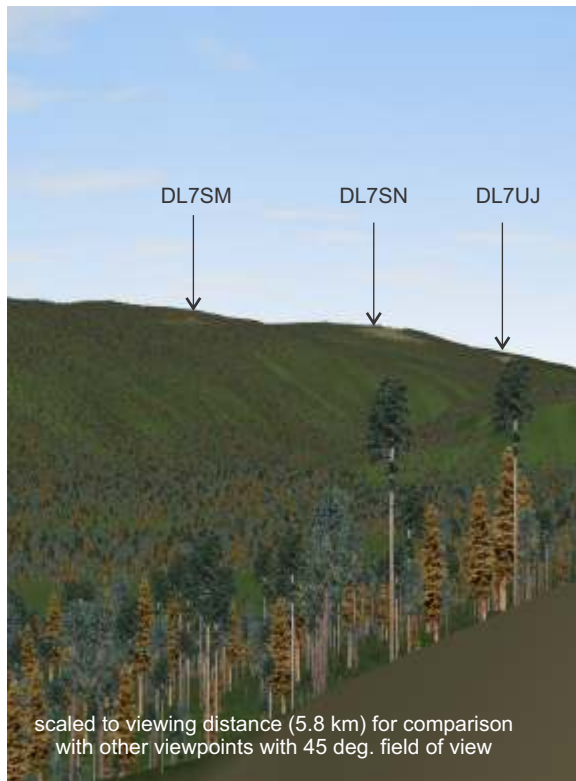
Viewpoint



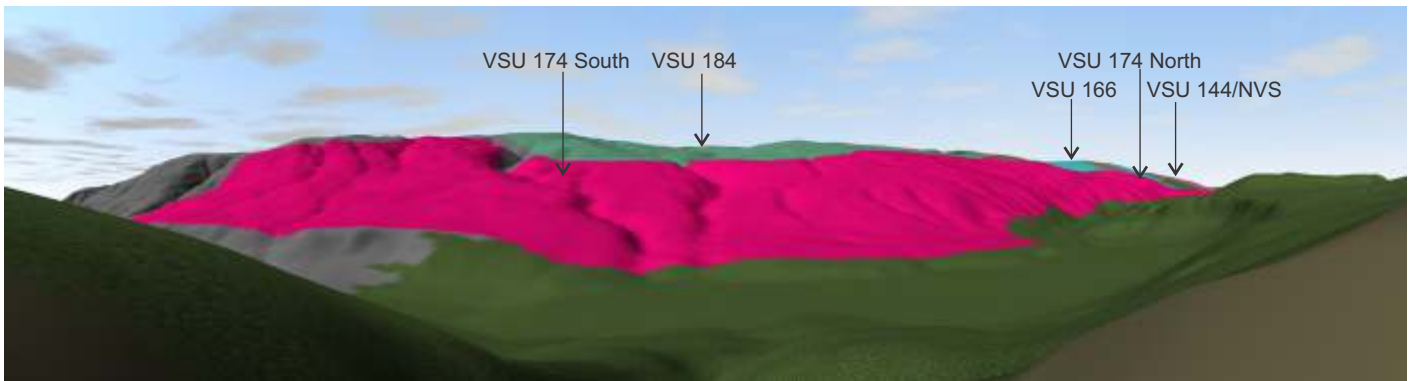
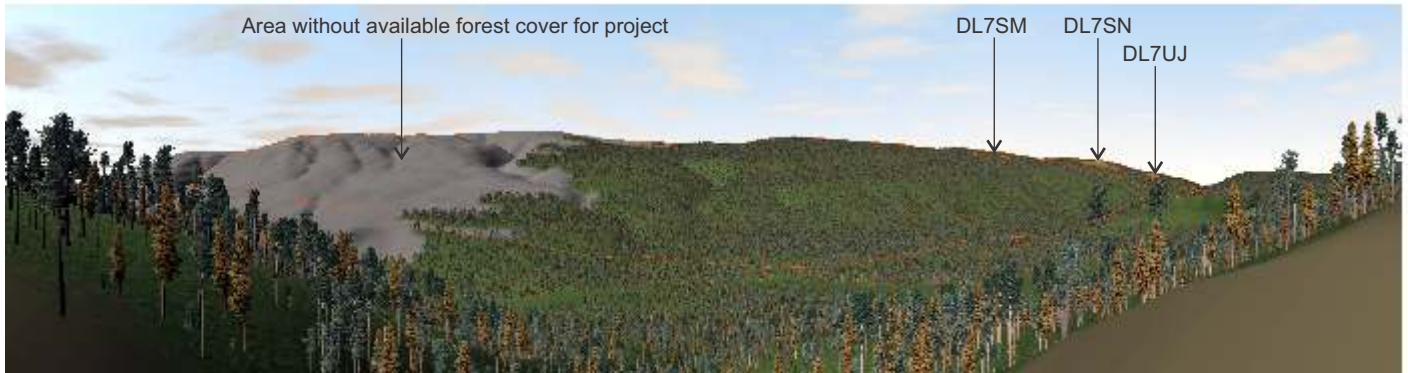
All views scaled to viewing distance for comparison , 45 deg. field of view.
See next pages for detailed viewpoint analyses.



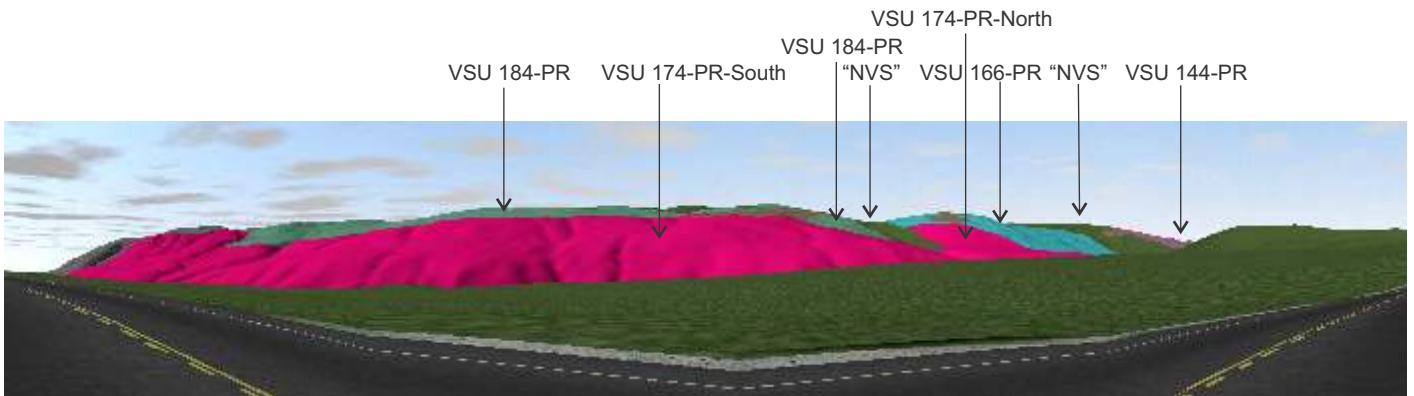
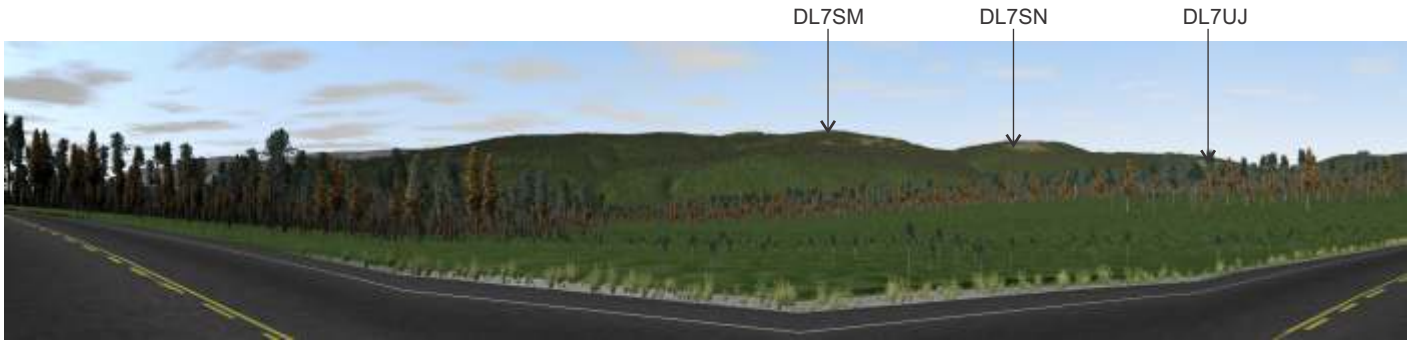
VP 3rd Canyon South (GPS 1796) South of Bridge 1522-1529



Viewpoint at Third Canyon



David Lake 3rd Canyon Viewpoint Percent Alteration		
Desc_	AREA2	% alt
VSU174S/184	843970.38	0.03%
DL7SM	248.38	
DL7SM	25.46	
DL7SM	17.73	
VSU174N/166/144/NVS	21177.11	6.12%
DL7SN	1026.60	
DL7SN	24.90	
DL7UJ	245.58	



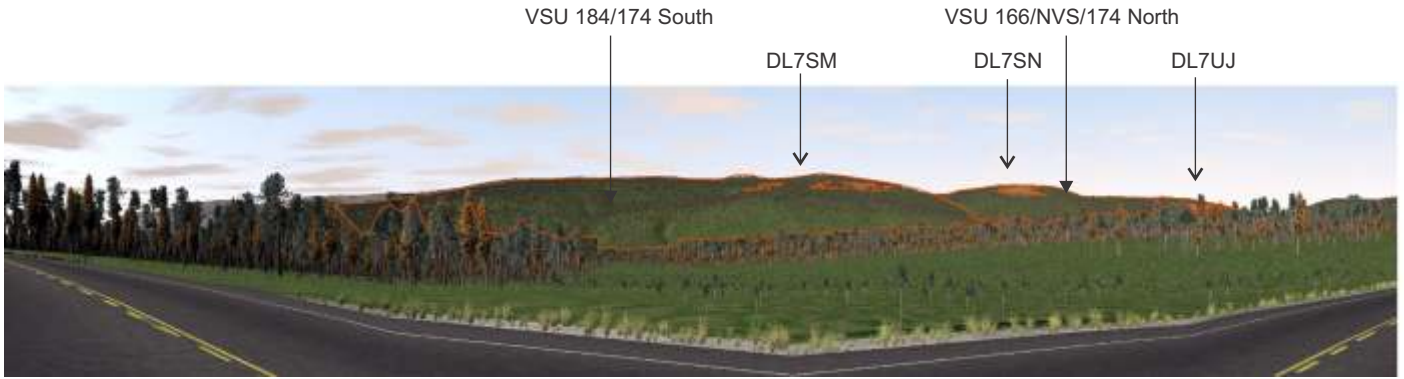
Visual Sensitivity Units with VQOs



scaled to viewing distance (4.2 km) for comparison with other viewpoints with 45 deg. field of view (closest viewpoint)

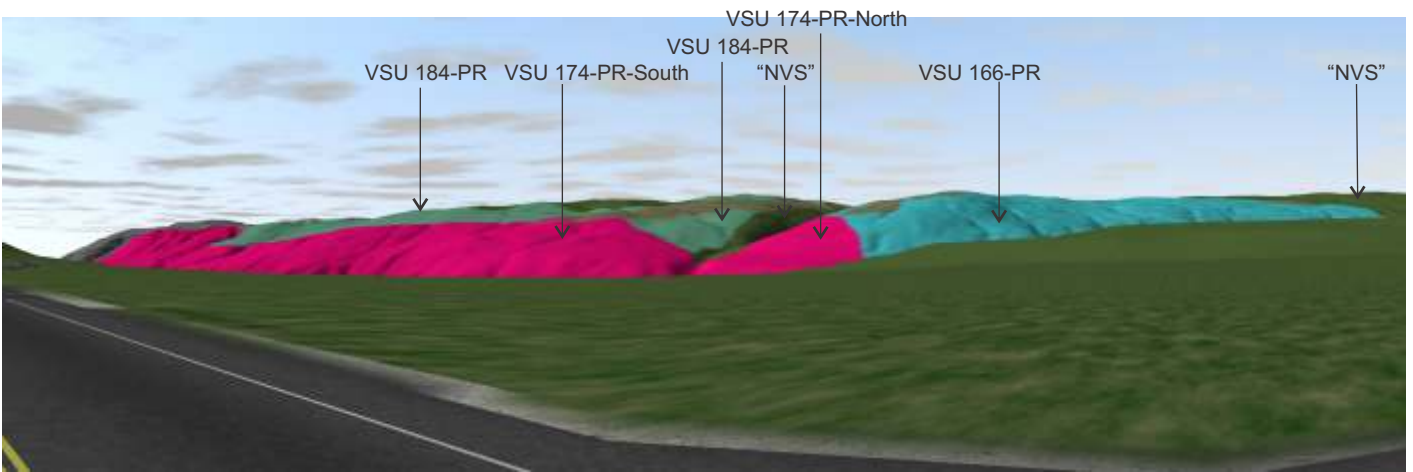
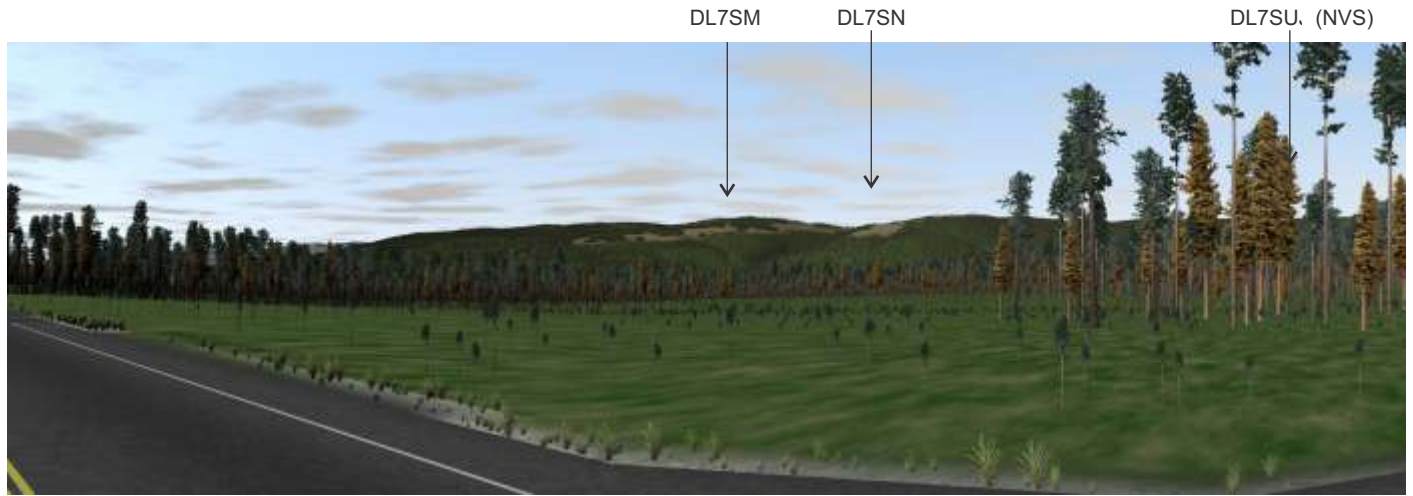
- Visual Force Convexity
- Visual Force Concavity

Viewpoint 21 Analysis



Viewpoint 21 Percent Alteration		
Desc_	AREA2	Percent Alt.
184/174S	286806.64	0.90%
DL7SM	141.06	
DL7SM	106.80	
DL7SM	80.33	
DL7SM	17.59	
DL7SM	91.68	
DL7SM	479.82	
DL7SM	74.70	
DL7SM	55.96	
DL7SM	1229.41	
DL7SM	127.07	
DL7SM	171.88	
174N/166/144/NVS	57158.99	5.74%
DL7SN	2383.28	
DL7SN	27.15	
DL7SN	34.43	
DL7UJ	541.42	
DL7UJ	292.54	

Viewpoint 21 Percent Alteration



Visual Sensitivity Units with VQOs



scaled to viewing distance (5.0 km) for comparison with other viewpoints with 45 deg. field of view

- Visual Force Convexity
- Visual Force Concavity

Viewpoint 22 Analysis

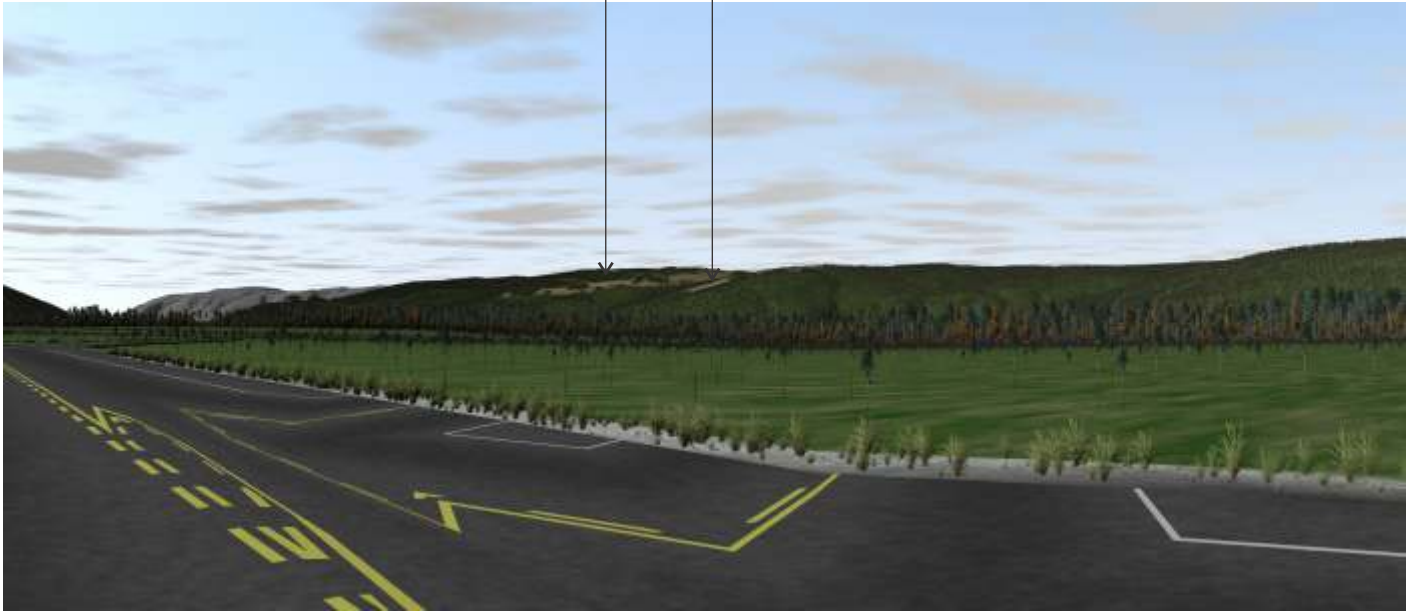


Area of Alteration

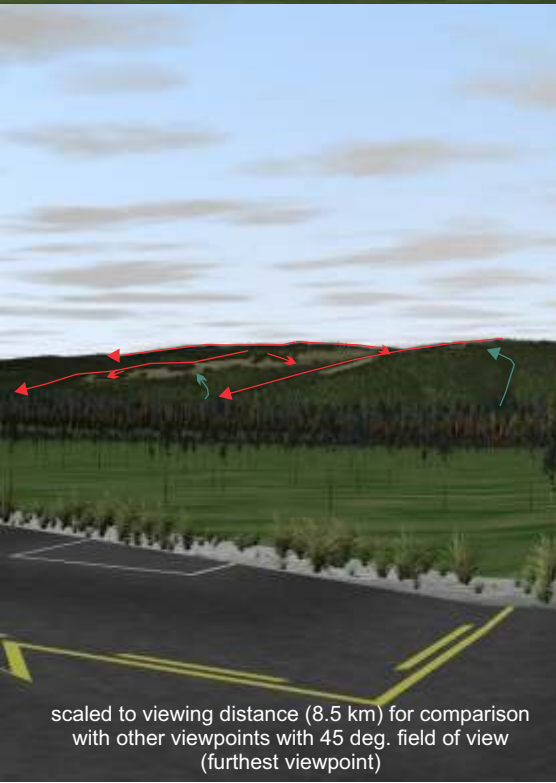
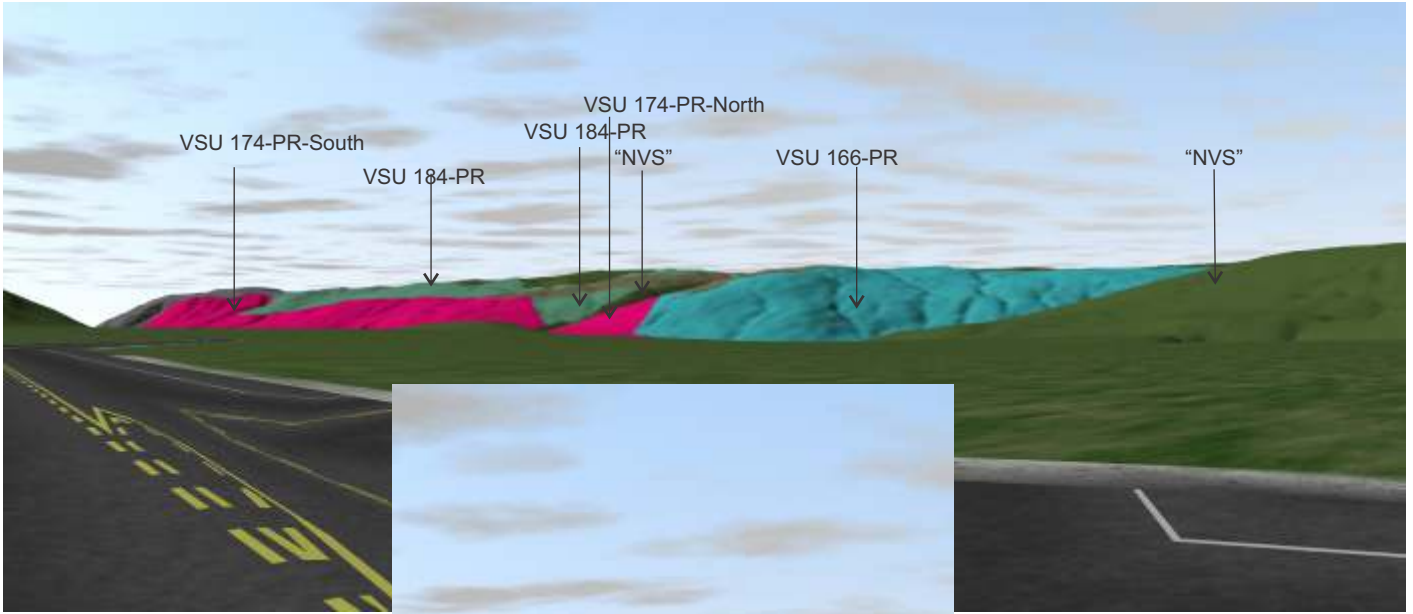
Percent Alteration Viewpoint 22		
DESC_	AREA2	Percent Alteration
174-184	185563.94	6.95%
DL7SM	1276.57	
DL7SM	2988.21	
DL7SM	3778.85	
DL7SM	99.27	
DL7SM	1280.19	
DL7SM	3467.93	
174-166	129644.98	3.57%
DL7SN	3988.45	
DL7SN	184.99	
DL7SN	262.11	
DL7SM	139.79	
DL7SM	13.55	
DL7SM	18.90	
DL7SM	25.52	

Viewpoint 22 Percent Alteration

DL7SM DL7SN

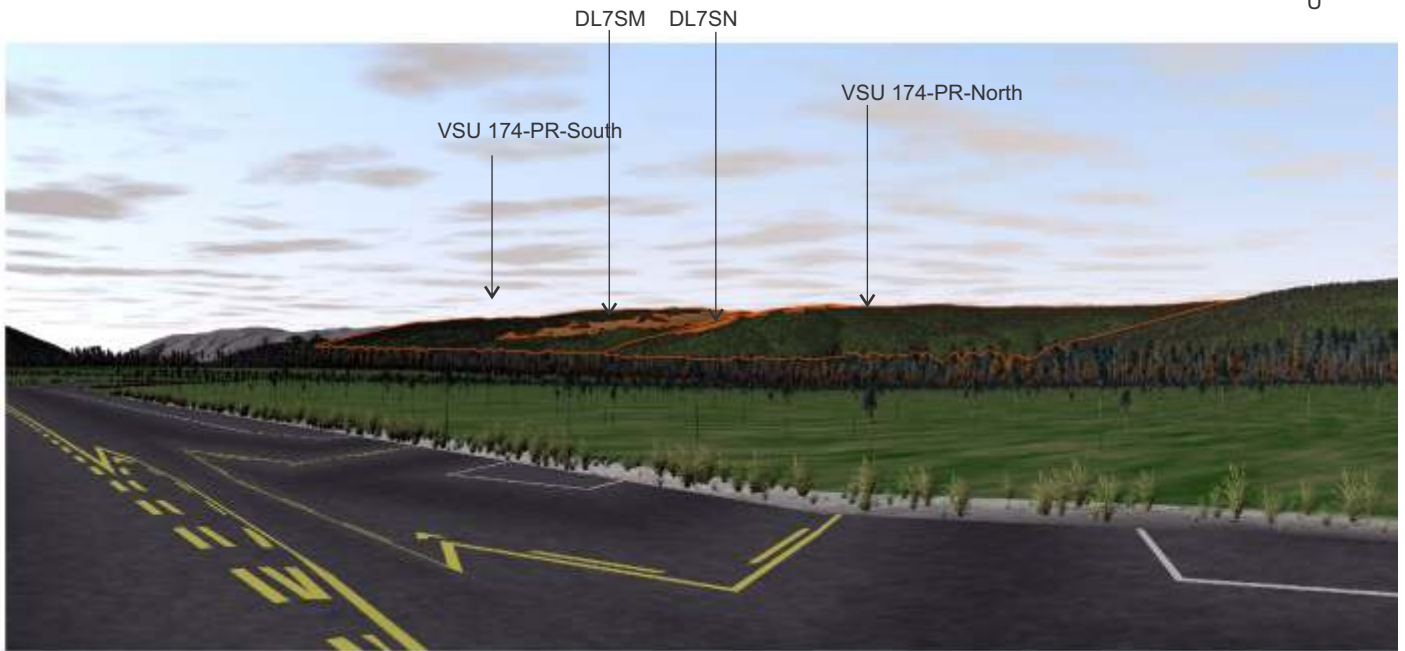


VSU 174-PR-South VSU 184-PR VSU 174-PR-North VSU 184-PR "NVS" VSU 166-PR "NVS"



- Visual Force Convexity
- Visual Force Concavity

Viewpoint 24 Analysis



Viewpoint rendered as test of potential visibility only,
 Minor visibility if any towards the blocks due to intervening screening.
 Do not use for overall percent alteration calculations.

Viewpoint 24 Percent Alteration		
Desc_	AREA2	
174S/184	106513.92	11.19%
DL7SM	457.13	
DL7SM	118.17	
DL7SM	2353.70	
DL7SM	2967.92	
DL7SM	110.05	
DL7SM	5916.23	
174N/166	215593.08	1.20%
DL7SN	1577.20	
DL7SN	177.39	
DL7SN	389.79	
DL7SN	284.50	
DL7SN	154.57	

for demonstration, not for application

for demonstration, not for application



VP 24 (GPS1792) 1442-1455